



Roanoke Valley-Alleghany
REGIONAL
commission

Connect

Collaborate

Cooperate

COVID-19 Dashboard

Roanoke Valley-Alleghany Regional Commission staff has prepared a COVID-19 dashboard to track regional cases and also includes demographics and mapping of vulnerable populations.

Included in the dashboard are unemployment claims, nursing home locations, and zip code COVID-19 data. COVID-19 cases and deaths are updated hourly from Johns Hopkins. To access the dashboard, click [HERE](#).

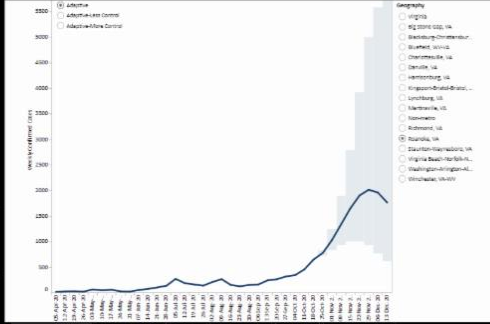
Demographic Selector

Alleghany County, Virginia
Botetourt County, Virginia
Craig County, Virginia
Franklin County, Virginia
Roanoke County, Virginia
Covington City, Virginia
Roanoke City, Virginia
Salem City, Virginia
Roanoke city, Virginia
Salem city, Virginia

August Unemployment Rate

Locality	June
Alleghany County	5.8%
Botetourt County	4.9%
Craig County	4.9%
Franklin County	5.3%
Roanoke County	5.3%
Covington City	8.2%
Roanoke City	8.3%
Salem City	5.8%
RVARC Region	6.1%

Source: Virginia Employment Commission September 30



- Geography**
- Virginia
 - Alleghany County, VA
 - Botetourt County, VA
 - Craig County, VA
 - Franklin County, VA
 - Roanoke County, VA
 - Covington City, VA
 - Roanoke City, VA
 - Salem City, VA
 - Roanoke, VA
 - Botetourt, VA
 - Alleghany, VA
 - Franklin, VA
 - Roanoke, VA
 - Salem, VA

Select Locality for Demographics
Selector: 24 Franklin

Households
137,942
Minority Population
69,544
People in Poverty
44,753
In Group Quarters
8,956
Households With No Vehicle
10,525

Population
334,159
People 65 and over
65,144
Deaths
77
Cases
5,642

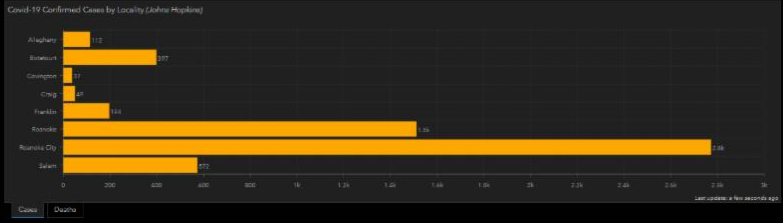


Image captured 10/28/2020 at 12:00pm

Commission Member Billy Martin, Sr. Recognized for Planning Leadership with Cardinal Award



The Virginia Chapter of the American Planning Association (APA) recently announced that the Honorable Billy Martin, Sr., Chairman of the Botetourt County Board of Supervisors, was this year’s Cardinal Award winner for Local Legislator of the Year. The Cardinal Award is presented to Virginia legislators who embrace the power and potential of sound planning practices to create great communities for all.

During Chairman Martin’s four terms on the Board of Supervisors representing the Blue Ridge District, Botetourt County has experienced increased growth in all sectors. Chairman Martin has championed the establishment of Urban Development Areas, expanded workforce housing, and fostered new industrial development.

Nick Rogers, AICP, CZA Vice President of External Affairs for APA Virginia noted that “Chairman Martin has clear command of the critical role that elected officials play in influencing good planning. He is a collaborative partner with both county and regional staff

and has been instrumental in addressing potential pitfalls in planning initiatives before they undermine the process.”

Chairman Martin has gone above and beyond with his dedication to good planning by representing the entire Roanoke region by serving as chair of the Roanoke Valley-Alleghany Regional Commission, chair of the Roanoke Valley Transportation Planning Organization, and chair of the Virginia Association of Planning District Commissions.

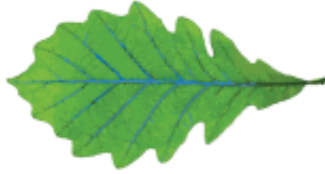
Regional Long Range Multimodal Transportation Plan Update

Every five years, the twenty-year long-range multimodal transportation plan for the Roanoke Valley is updated. This year, the rural long-range transportation plan extending from the Roanoke Valley to the Alleghany Highlands is getting an update, too. Now that I-81 and U.S. 460 East improvements are underway, what safety, access, traffic, maintenance, or other transportation needs do people have?

Take the survey at transportation2045.metroquest.com.

The screenshot displays a web-based survey interface titled "MAP MARKERS". The interface is framed by a dark blue border with navigation elements. On the left, a vertical menu lists steps: "WELCOME", "TRANSPORTATION NEEDS", "BUDGET ALLOCATION", and "MAP MARKERS" (the current step). On the right, there is a "WRAP UP" button. The main content area features a map of the Roanoke-Alleghany region. Above the map, there is a legend with four categories: "Safety" (yellow diamond icon), "Access" (blue bus icon), "Traffic" (red traffic light icon), and "Maintenance" (black car icon). A prompt above the legend reads "Please drag and drop at least 3 markers on the map." The map itself shows various roads and locations, with several markers already placed. A "Next Task" button is visible in the top right corner of the map area.

Upper and Middle James Riparian Consortium launches new Streamside Program Report Tool



Upper & Middle James Riparian Consortium

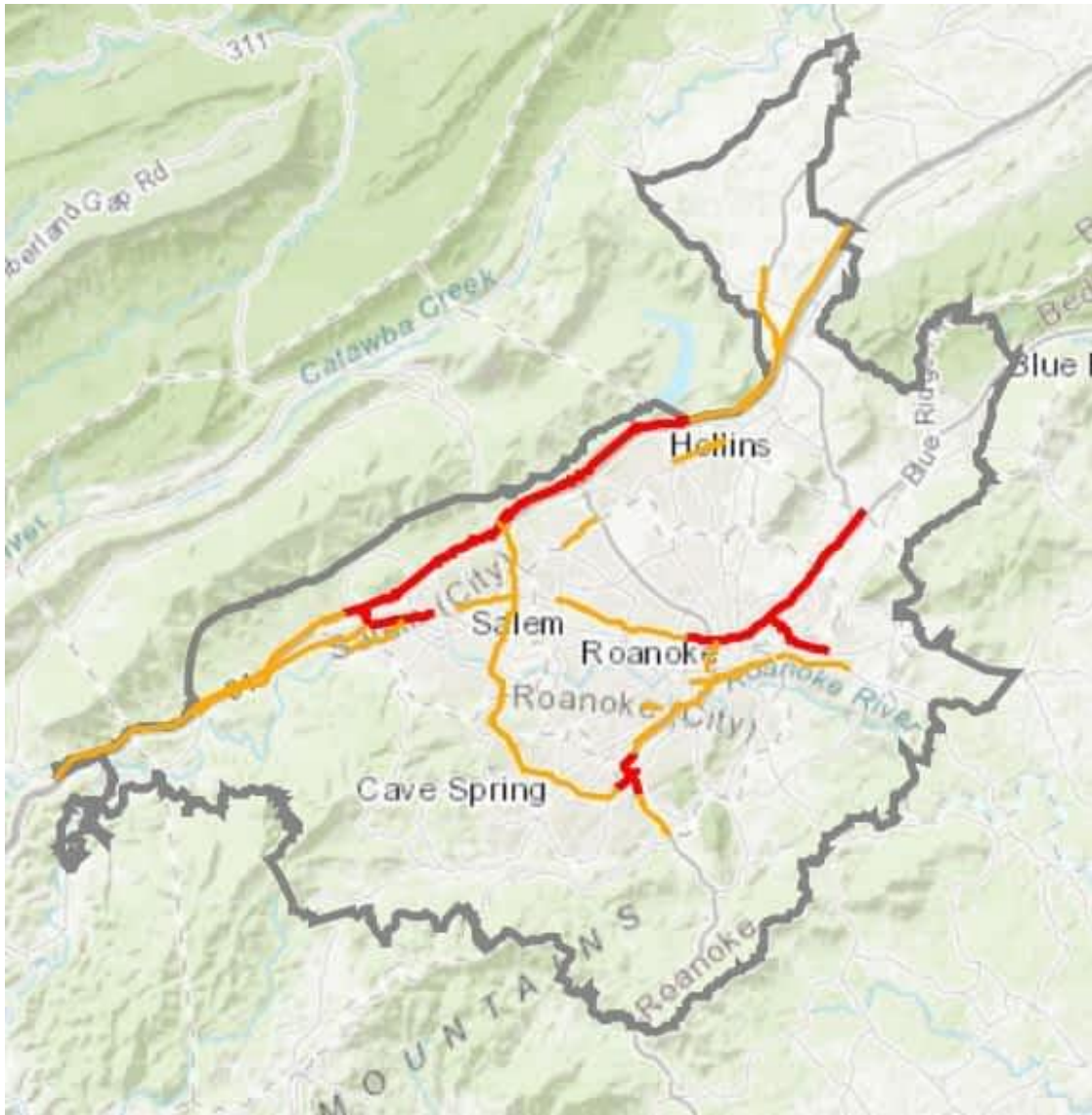
The Streamside Program Report Tool, developed by the Chesapeake Conservancy, aims to assist landowners with identifying the eligible conservation programs that may be utilized to implement agricultural best management practices. The tool asks a few basic questions about the area of interest and landowner objectives, and then generates a report tailored to a user's response. To run a report on your property, click [here](#).

Regional Commission Updates Traffic Congestion Management Process

The Roanoke Valley doesn't have much severe traffic congestion – and we want to keep it that way! After the population of the urbanized region exceeded 200,000, the Roanoke Valley Transportation Planning Organization adopted its first federally required congestion management process in 2014. The 2020 [Traffic Congestion Management Process](#), approved on October 22, is the first update, incorporating changes in technology and regulations, data analyses, and stakeholder input.

The update identifies five priority corridors for congestion management identified through analysis of real-time data collected from GPS-equipped vehicles and mobile devices as well as corridors of concern identified through public input. View the [interactive map of corridors for congestion management here](#).

Learn more about the update of the [Traffic Congestion Management Process here](#).



DEQ Reopens Request for Applications for the Citizens Water Quality Monitoring Grant

Applications for the Citizens Water Quality Monitoring Grant are now being accepted by the Department of Environmental Quality for activities in 2021. Funds are available for organizations with established water quality monitoring programs or for groups who are looking to start their own monitoring program.

Applications are due no later than November 12th, 2020.



Click [here](#) for more information and to download the RFA.

Regional Commission Hosts Transportation Equity Chats

To promote the long-range plan survey during the COVID-19 pandemic, the Roanoke Valley-Alleghany Regional Commission held a series of virtual Transportation Equity Chats. Local historian Jordan Bell described how urban renewal replaced homes and cemeteries with I-581 and wider roads, setting the stage for why public input is so important today. Over the next few weeks, staff from localities, Valley Metro, and the Virginia Department of Transportation described how public input influences decisions and how people can get involved. Watch the videos linked below.



October is Transit Appreciation Month

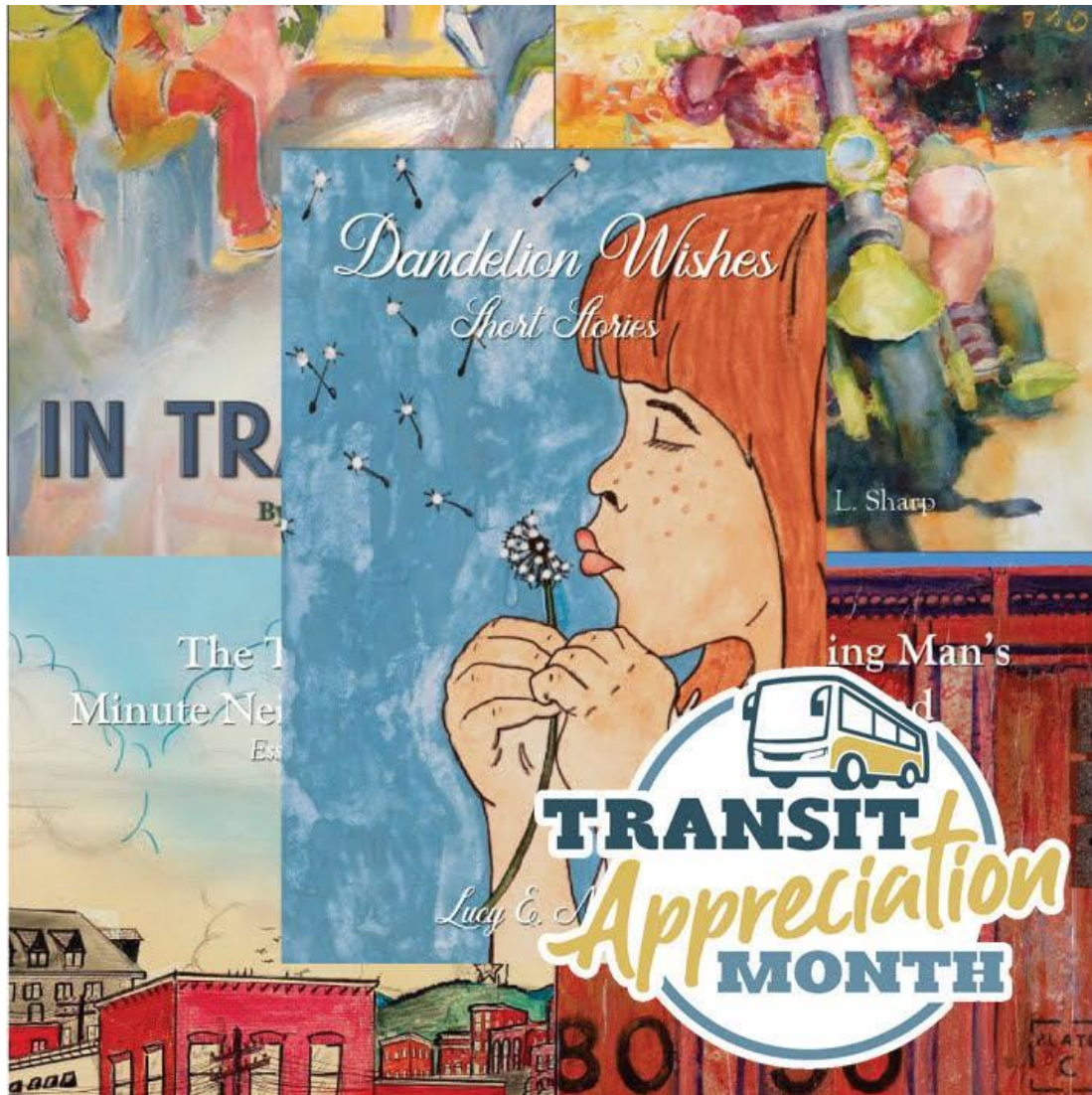
Public transit is vital to our communities, a safe and reliable service that many residents of our region count on to get to work and to run essential errands. This month, RIDE Solutions and the Department of Rail and Public Transportation want to thank transit agencies and workers for keeping our region moving in difficult times.

Public transit helps make sure our essential workers get to where they need to go, safely, every trip and transit agencies have put new COVID-19 safety procedures in place so that everyone can ride with confidence.

If you would like to help support RIDE Solutions work advocating for more and better transit you can purchase an Art by Bus Chapbook from the RIDE Solutions store. ridesolutions.org/store



Each chapbook is only \$5, or \$20 for all five!



Ongoing Projects

The Roanoke Valley-Alleghany Regional Commission is always working with localities on projects that benefit the region. Some of these projects are listed below.

- Alleghany Highlands Economic Impact of the Arts

- Alleghany Highlands Gap Analysis
- Rural Long-Range Transportation Plan
- City of Covington Downtown Revitalization Planning Grant Assistance
- City of Roanoke Neighborhood Walk Project
- City of Roanoke Pedestrian Safety Campaign
- Regional Housing Study: Franklin and Roanoke Counties, and the Cities of Roanoke and Salem
- Promotion and access improvements for the Roanoke River Blueway

For more information on ongoing projects contact [Tim Pohlad-Thomas](#) or visit [RVARC.org](#).

Visit our website

[Roanoke Valley-Alleghany Regional Commission](#) | 313 Luck Ave., SW / Roanoke, VA
24016
540.343.4417 | rvarc@rvarc.org | rvarc.org

STAY CONNECTED



Roanoke Valley-Alleghany Regional Commission | PO Box 2569, Roanoke, VA 24010

[Unsubscribe vapdc@associationbuilders.com](mailto:vapdc@associationbuilders.com)

[About our service provider](#)

Sent by rvarc@rvarc.org powered by

